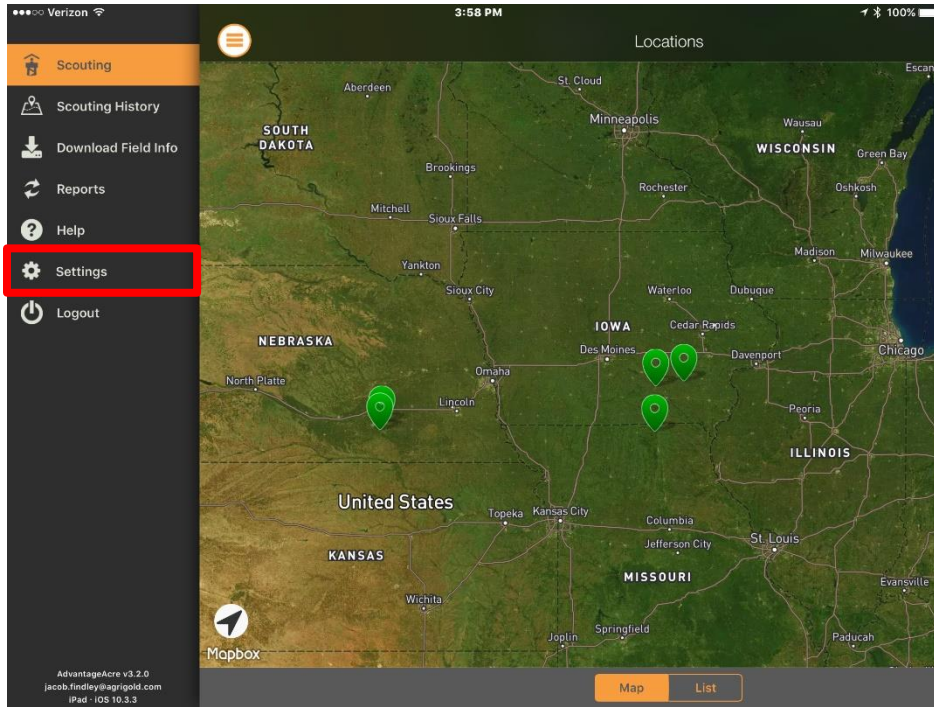
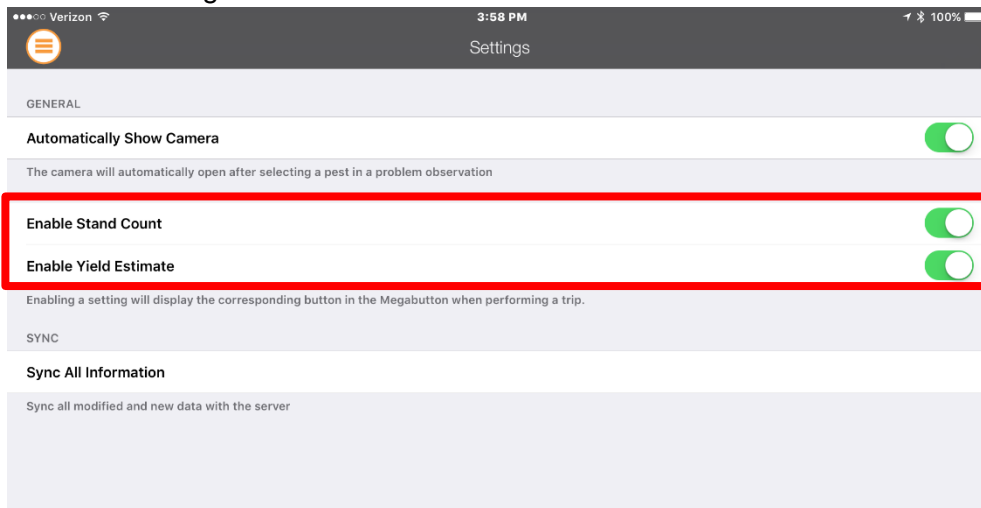


Enabling Yield Estimate and Stand Count on the Scouting App

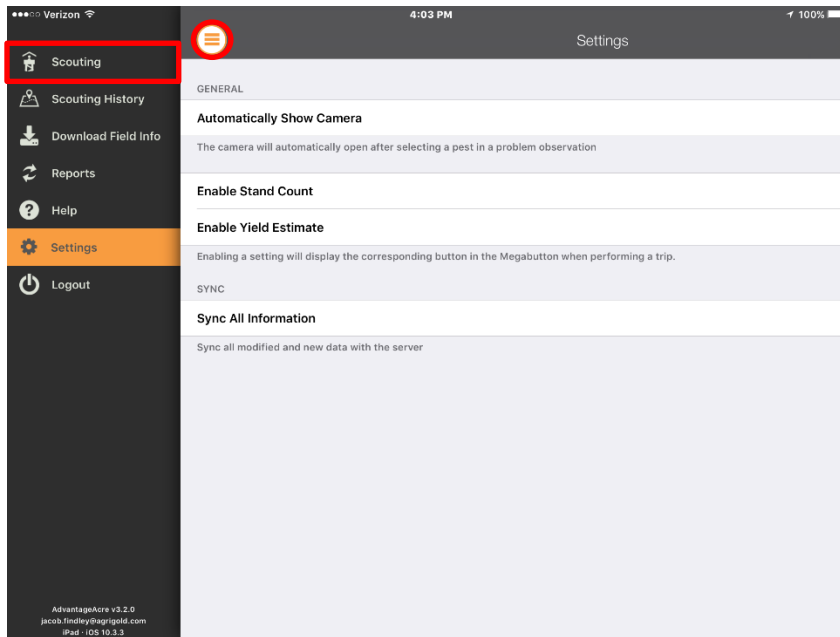
1. Select the Menu button in the upper left-hand corner and select Settings



2. Enable Stand Count and Yield Estimate while taking a scouting trip by toggling the switch on the right-hand side.



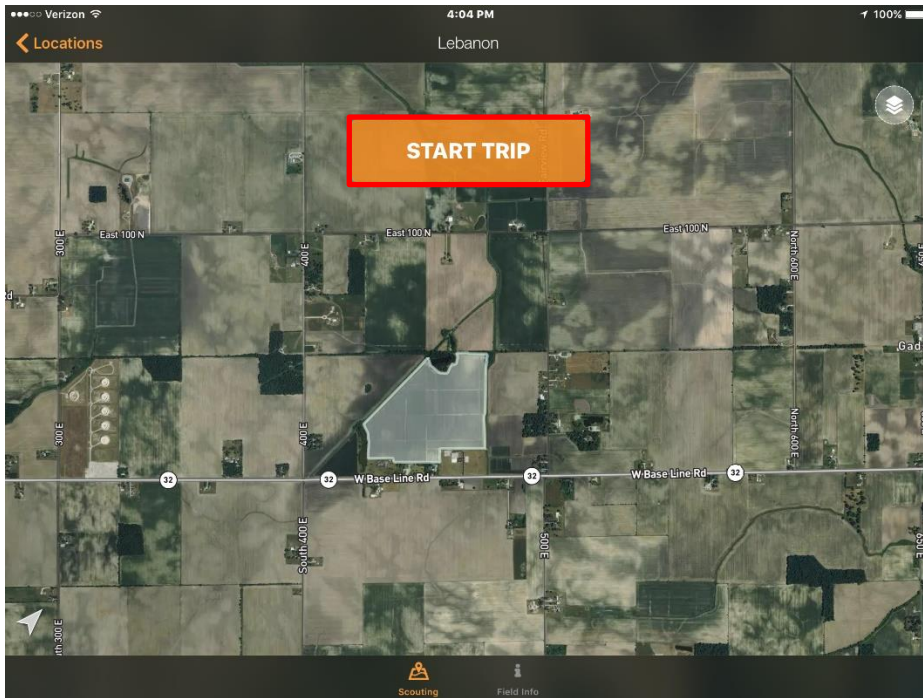
3. Select the Menu Button, then select Scouting



4. Select Map/List, then select the field to scout



5. Select Start Trip



6. Select the + in the bottom right-hand corner to add notes while scouting. Yield Estimate and Stand Count will be shown as menu selections

