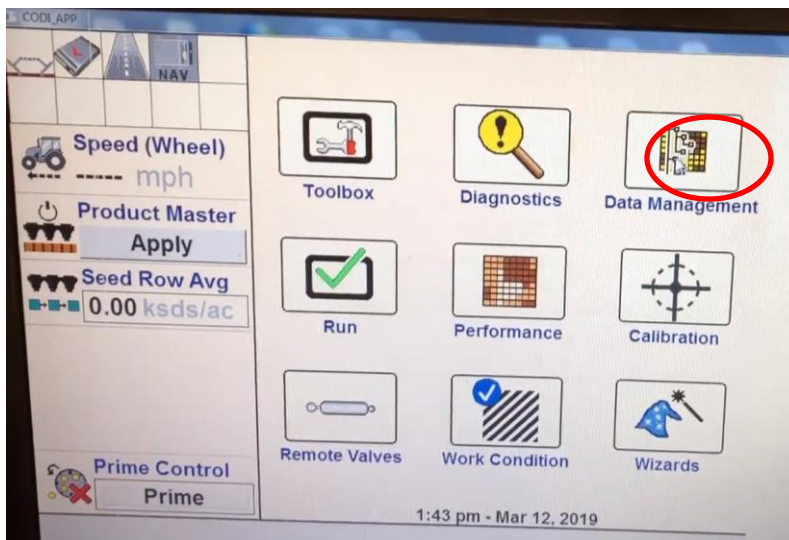


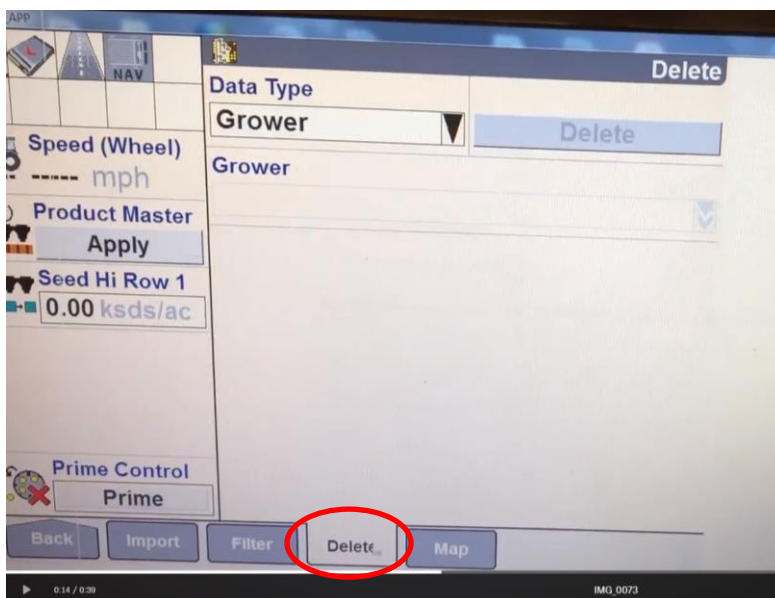
Deleting Previous Grower-Farm-Field Data from Case IH Pro 600 & 700v28 using .cn1

When using .cn1 files, to avoid duplicating fields in the monitor, before uploading new VRx:

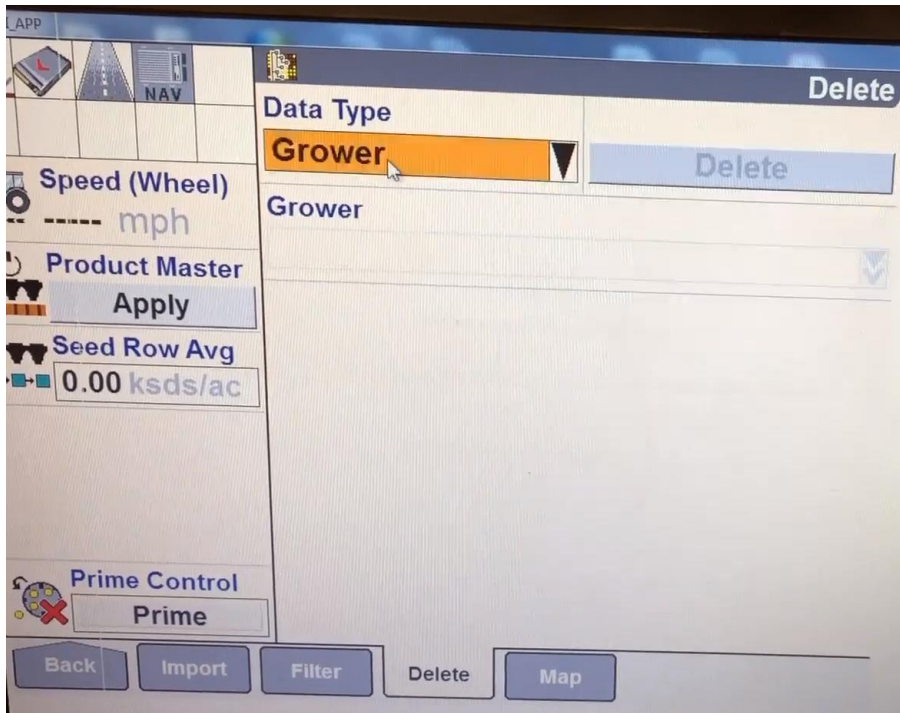
1. Click on **Data Management** button.



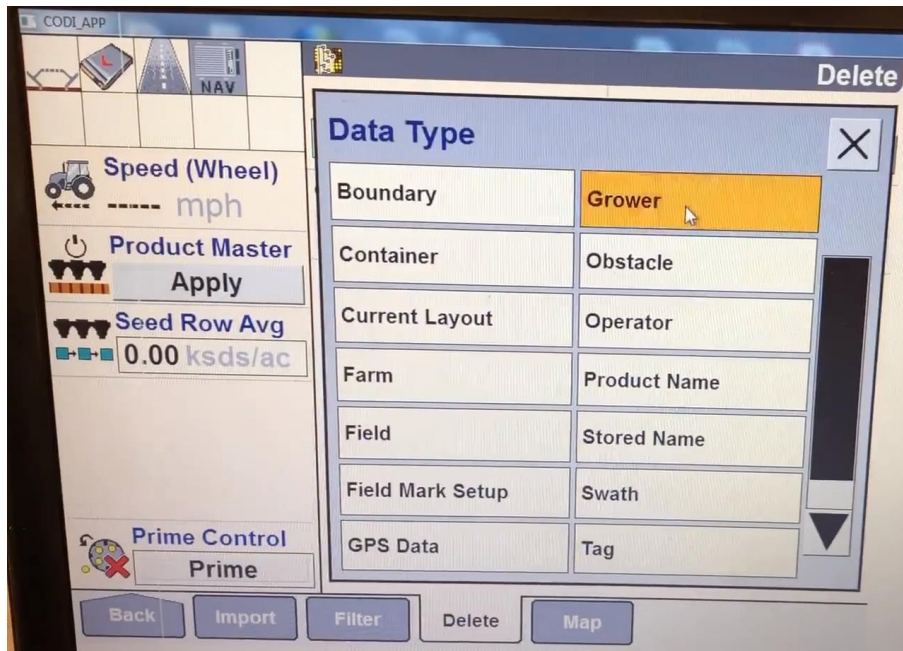
2. Click on **Delete** tab.



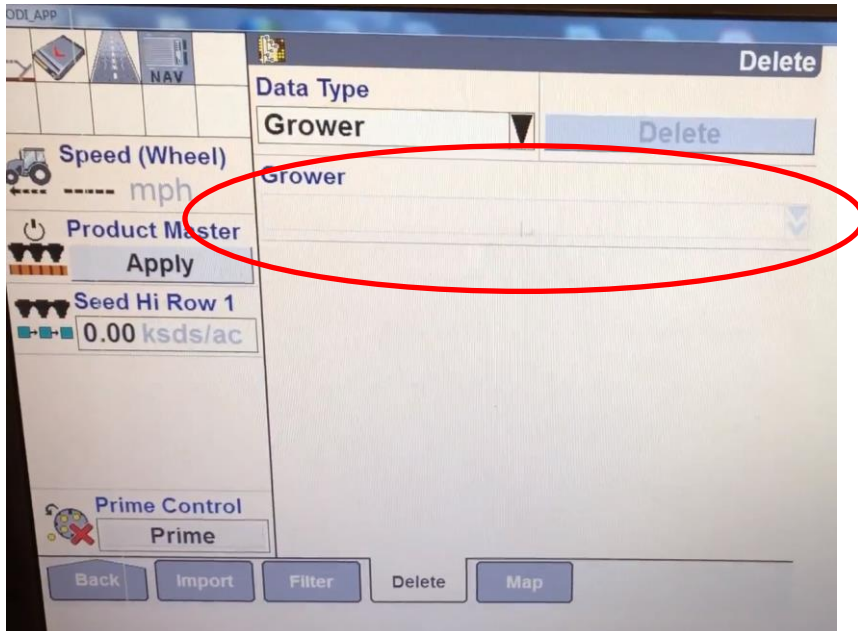
3. Select **Data Type** with dropdown arrow box.



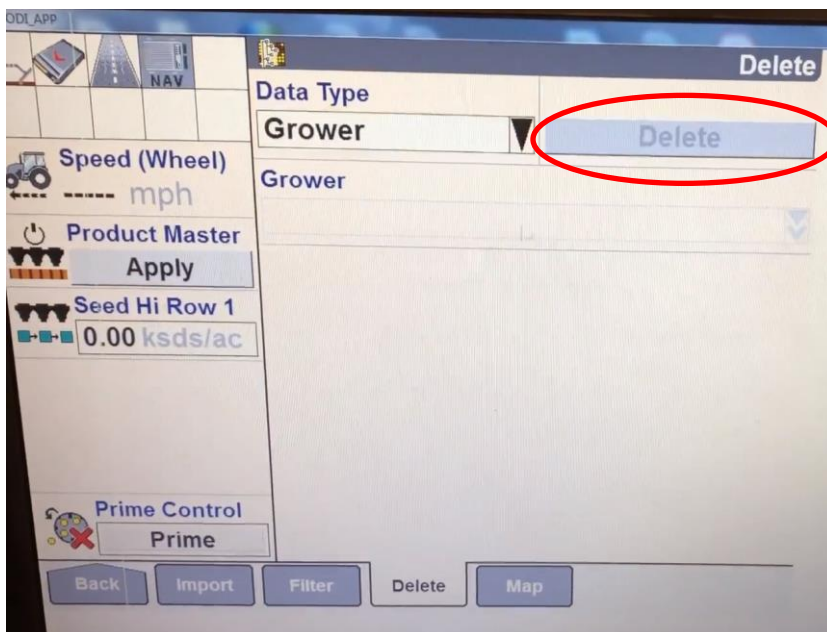
4. There are 2 pages of **Data Type** options. **Choose Grower.**



5. If there is a **Grower-Farm-Field** in the monitor, it is listed under **Grower** in the dropdown box.



6. Click on **Delete**. A **Pop-Up Box** will appear asking **Yes or No** to delete data. **Select Yes** to delete out all previous **as applied data** plus **Grower-Farm-Field** structure. *You are ready to upload your new VRx's.*



Case IH AFS Subscribers Support

855-423-7435

Advantage Acre Support

855-278-9134